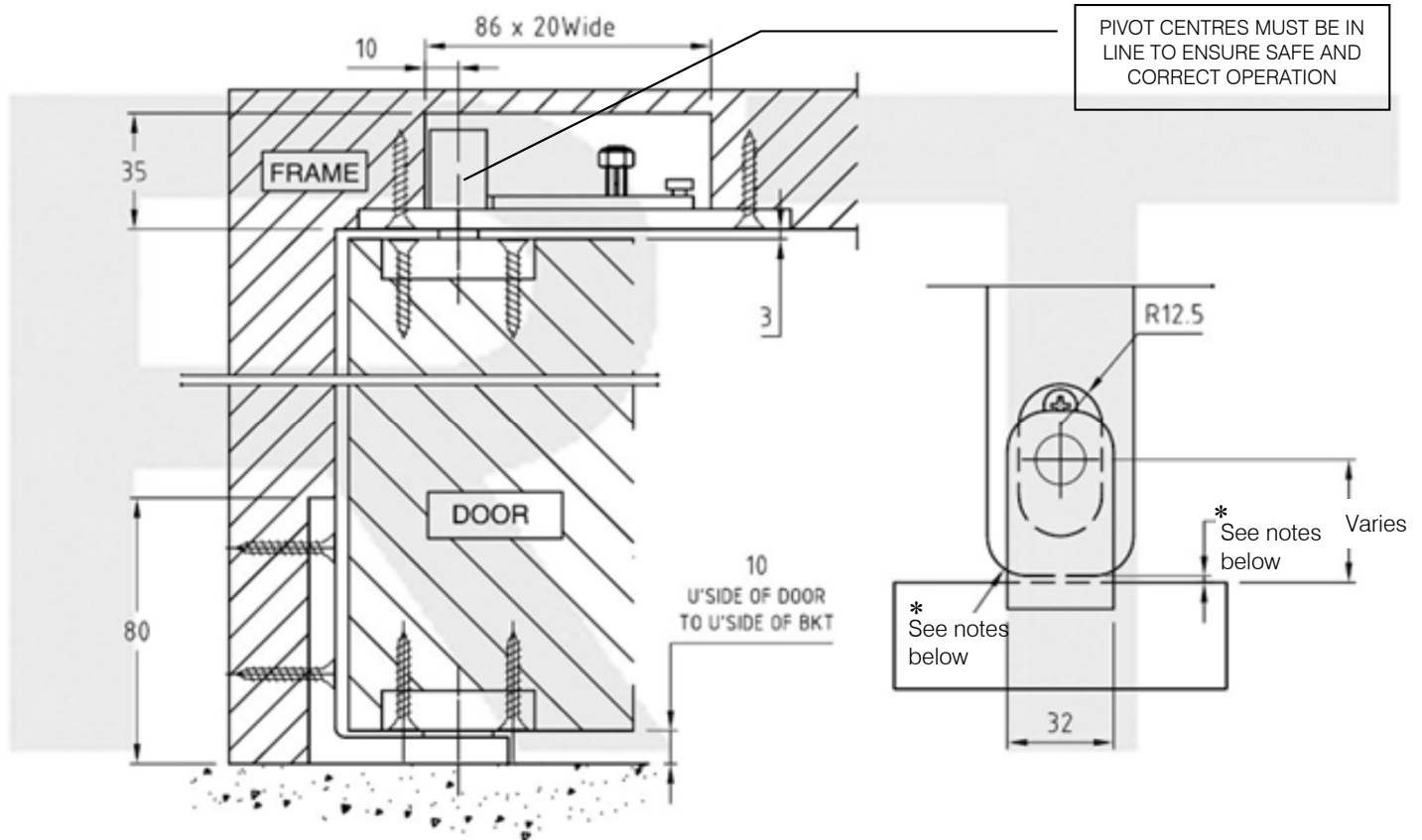
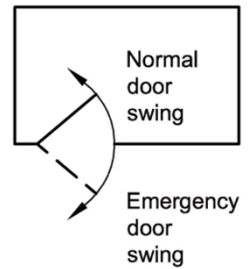


## Royde & Tucker H131-400 HI-LOAD pivot set

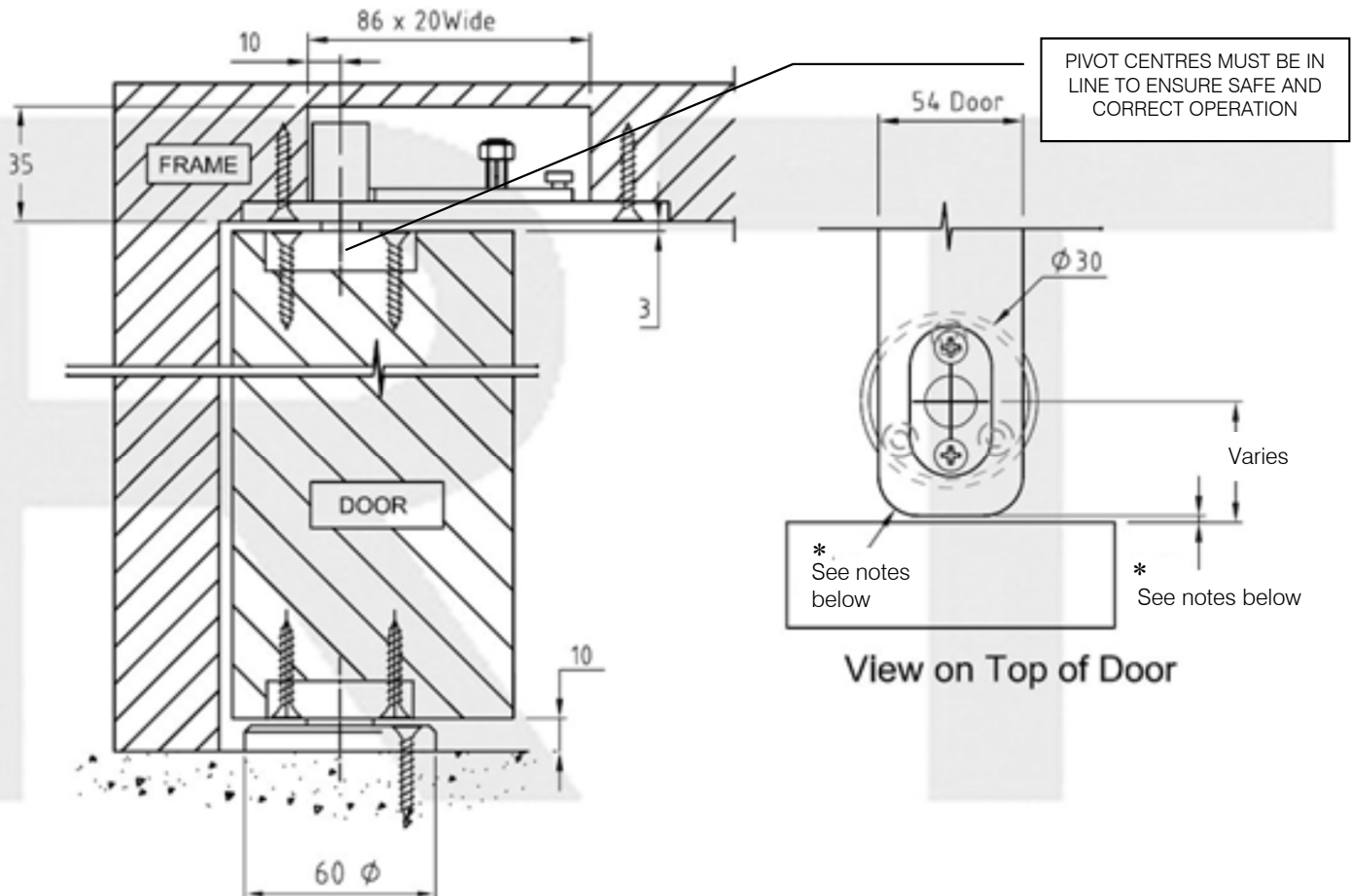
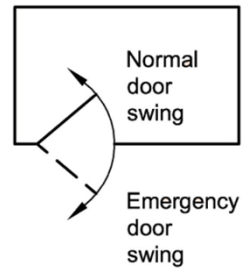


- Grade 304 stainless steel
- Maintenance free, guaranteed for 25 years
- Suitable for FD30 and FD60 doors, to BS 476 for both single and double door applications
- Allows the door to swing in either direction
- \*For 44mm non FR doors an R9 radius is required on the pivot edge with a 4mm door and frame gap
- \*For 44mm thick Fire doors an R15 radius is required on the pivot edge as only a 3mm gap is permitted between the door and frame.
- \*For 54mm thick Fire doors an R20 radius is required on the pivot edge as only a 3.5mm gap is permitted between the door and frame.
- Medium duty for internal doors weighing up to 80kg when floor mounted and up to 1100mm wide when jamb mounted
- Top and bottom door plates have HI-LOAD maintenance free oil impregnated bronze bearings
- Set includes door bottom pivot, top centre, door brackets and M5 x 30mm screws
- For adjustable unit see H131-450

Note: Door plates radii R12.5 for easier preparation

**Royde & Tucker Ltd**  
Bilton Road  
Cadwell lane  
Hitchin  
SG4 0SB  
Tel:01462 444444  
Fax:01462 444433  
www.ratman.co.uk  
e-mail: sales@ratman.co.uk

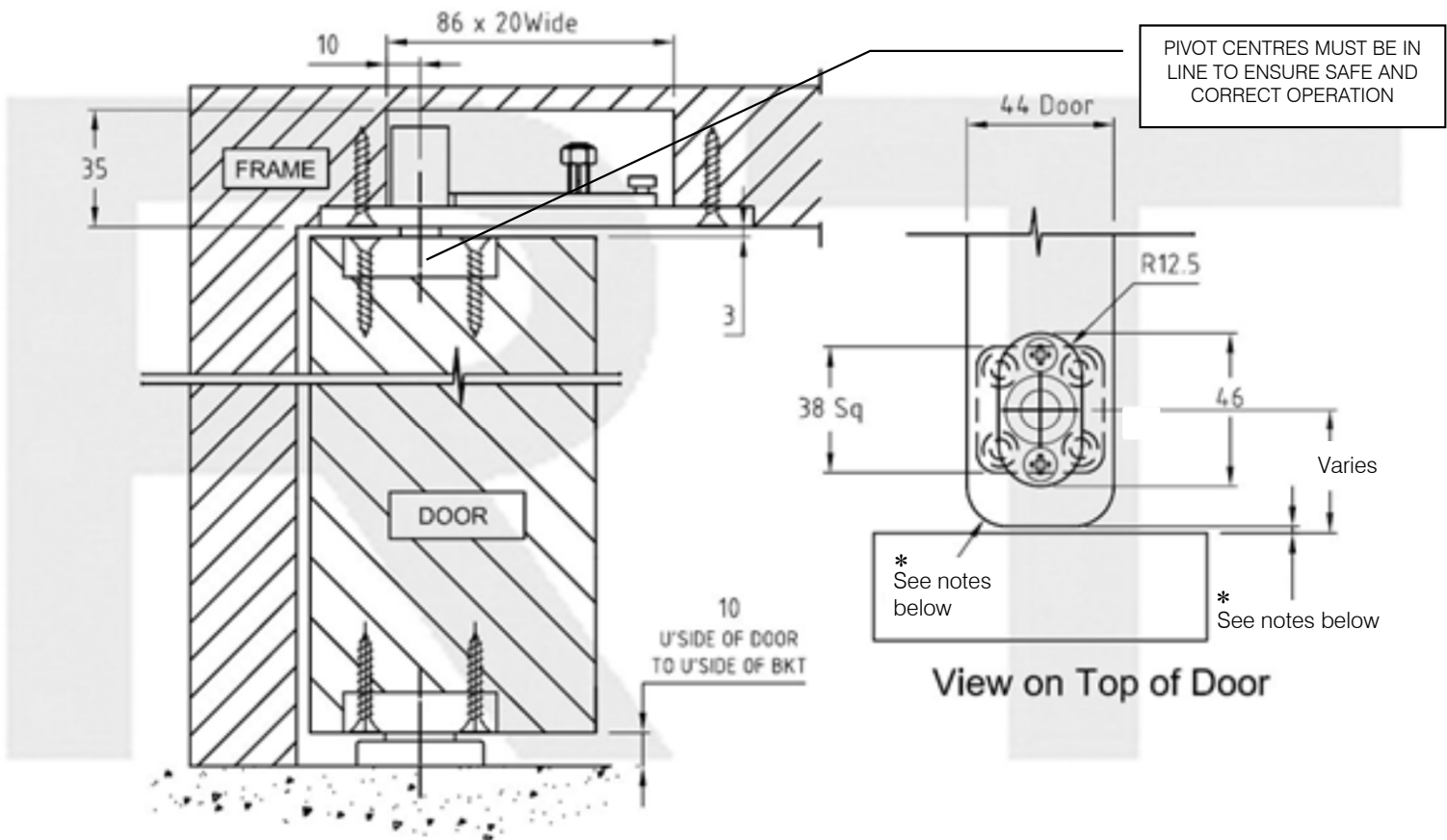
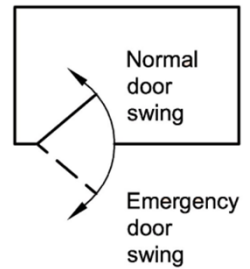
## Royde & Tucker H131-401 HI-LOAD pivot set



- Grade 304 stainless steel
- Allows the door to swing in either direction
- Maintenance free, guaranteed for 25 years
- Suitable for FD30 and FD60 doors, to BS 476 for both single and double door applications
- \*For 44mm non FR doors an R9 radius is required on the pivot edge with a 4mm door and frame gap
- \*For 44mm thick Fire doors an R15 radius is required on the pivot edge as only a 3mm gap is permitted between the door and frame.
- \*For 54mm thick Fire doors an R20 radius is required on the pivot edge as only a 3.5mm gap is permitted between the door and frame.
- Heavy duty for internal doors weighing up to 120kg and up to 1100mm wide
- Top and bottom door plates have HI-LOAD maintenance free oil impregnated bronze bearings
- Set includes door bottom pivot, top centre, door brackets and M5 x 30mm screws
- For adjustable unit see H131-451
- Note: Door plates radii R12.5 for easier preparation

**Royde & Tucker Ltd**  
Bilton Road  
Cadwell lane  
Hitchin  
SG4 0SB  
Tel:01462 444444  
Fax:01462 444433  
www.ratman.co.uk  
e-mail: sales@ratman.co.uk

## Royde & Tucker H131-402 HI-LOAD pivot set



- Grade 304 stainless steel
- Allows the door to swing in either direction
- Maintenance free, guaranteed for 25 years
- Suitable for FD30 and FD60 doors, to BS 476 for both single and double door applications
- \*For 44mm non FR doors an R9 radius is required on the pivot edge with a 4mm door and frame gap
- \*For 44mm thick Fire doors an R15 radius is required on the pivot edge as only a 3mm gap is permitted between the door and frame.
- \*For 54mm thick Fire doors an R20 radius is required on the pivot edge as only a 3.5mm gap is permitted between the door and frame.
- Bottom bracket is floor mounted and doesn't protrude beyond the doors face
- Medium duty for internal doors weighing up to 80kg and up to 1100mm wide
- Top and bottom door plates have HI-LOAD maintenance free oil impregnated bronze bearings
- Set includes door bottom pivot, top centre, door brackets and M5 x 30mm screws
- For adjustable unit see H131-452
- Note: Door plates radiused R12.5 for easier preparation

**Royde & Tucker Ltd**

Bilton Road

Cadwell lane

Hitchin

SG4 0SB

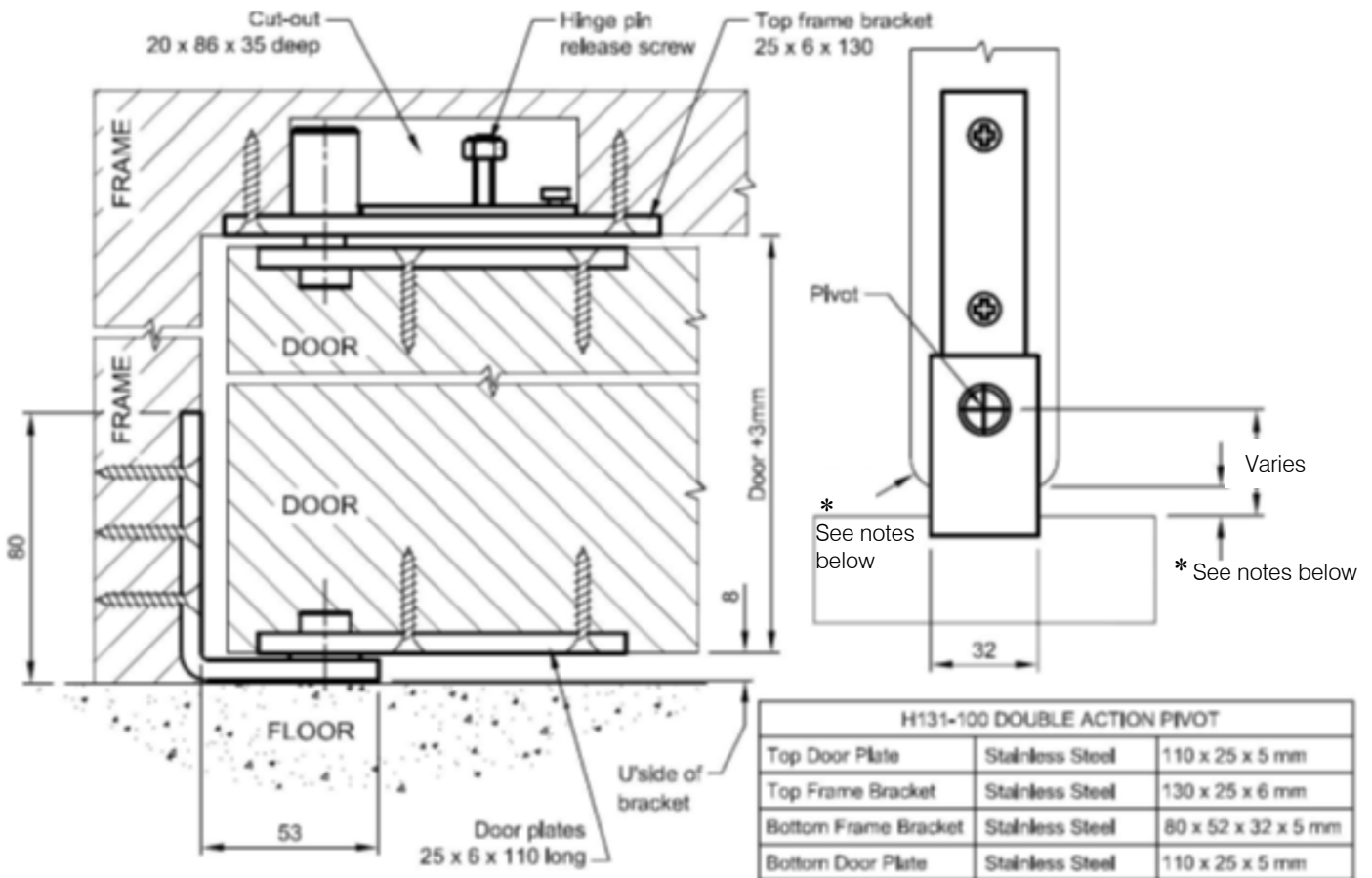
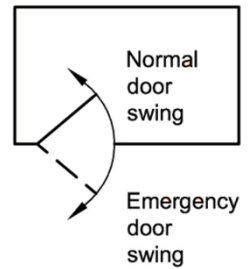
Tel:01462 444444

Fax:01462 444433

www.ratman.co.uk

e-mail: sales@ratman.co.uk

## Royde & Tucker H131-100 HI-LOAD pivot set



- Grade 304 stainless steel
- Maintenance free, guaranteed for 25 years
- Allows the door to swing in either direction
- Suitable for FD30 and FD60 doors, to BS 476 for both single and double door applications
- \*For 44mm non FR doors an R9 radius is required on the pivot edge with a 4mm door and frame gap
- \*For 44mm thick Fire doors an R15 radius is required on the pivot edge as only a 3mm gap is permitted between the door and frame.
- \*For 54mm thick Fire doors an R20 radius is required on the pivot edge as only a 3.5mm gap is permitted between the door and frame.
- Medium duty for internal doors weighing up to 80kg when floor mounted and up to 1100mm wide when jamb mounted
- Top and bottom door plates have HI-LOAD maintenance free oil impregnated bronze bearings
- Set includes door bottom pivot, top centre, door brackets

**Royde & Tucker Ltd**

Bilton Road  
Cadwell lane  
Hitchin  
SG4 0SB

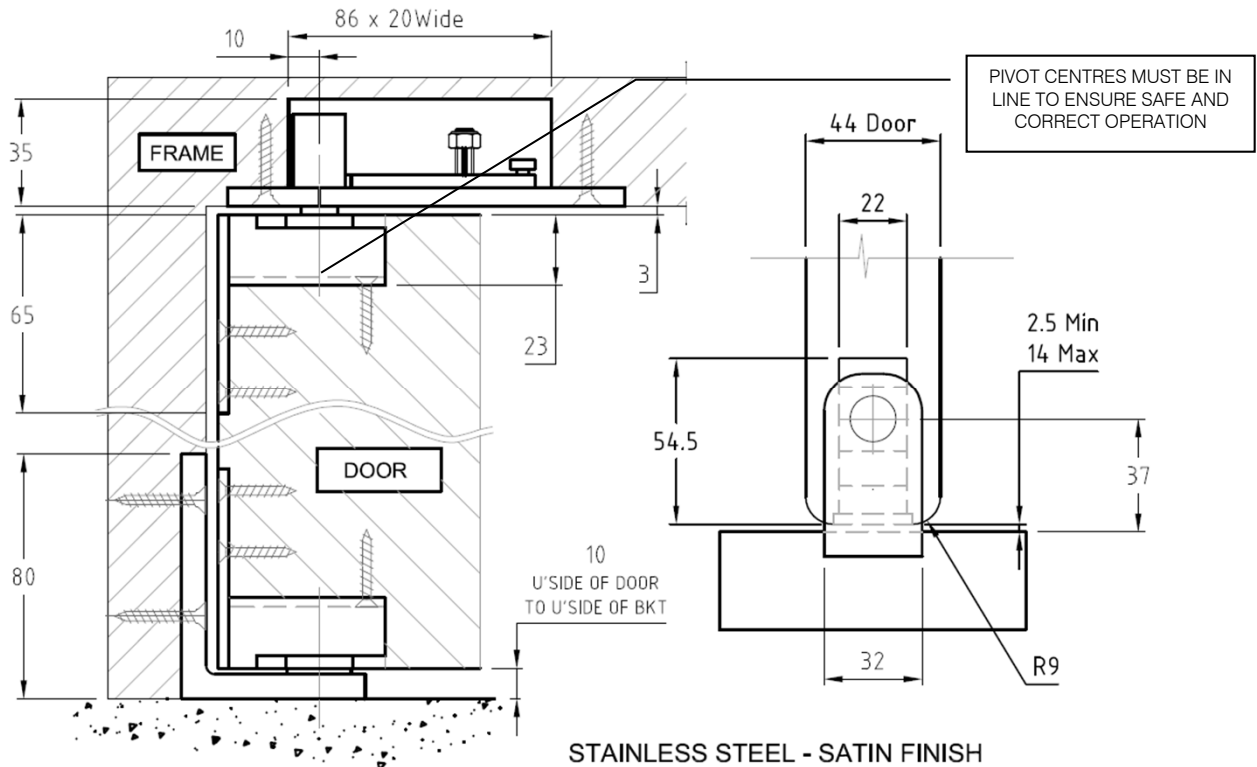
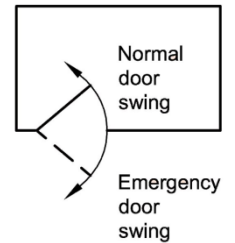
Tel:01462 444444

Fax:01462 444433

www.ratman.co.uk

e-mail: sales@ratman.co.uk

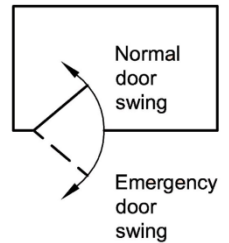
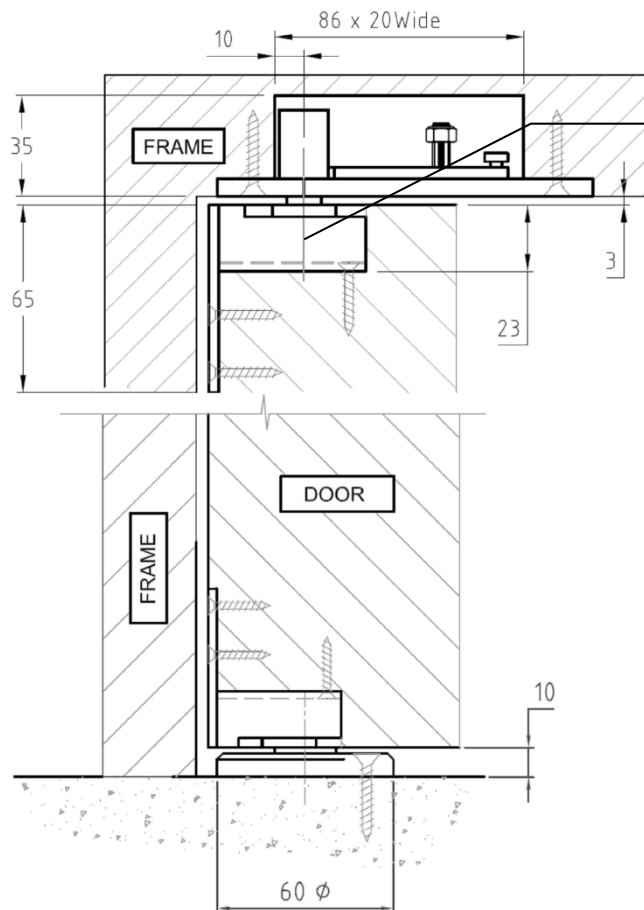
## Royde & Tucker H131-450 HI-LOAD pivot set



- Grade 304 stainless steel
- Maintenance free, guaranteed for 25 years
- Allows the door to swing in either direction
- Inclusive of adjustable top and bottom brackets (+/-5.5mm)
- For 44mm thick doors an R9 radius is required on the pivot edge
- For 54mm thick doors an R15 radius is required on the pivot edge
- Bottom bracket is frame mounted
- Medium duty for internal doors weighing up to 80kg and up to 1100mm wide
- Top and bottom door plates have HI-LOAD maintenance free oil impregnated bronze bearings
- Set includes door bottom pivot, top centre, door brackets and screws

**Royde & Tucker Ltd**  
Bilton Road  
Cadwell lane  
Hitchin  
SG4 0SB  
Tel:01462 444444  
Fax:01462 444433  
www.ratman.co.uk  
e-mail: sales@ratman.co.uk

## Royde & Tucker H131-451 HI-LOAD pivot set

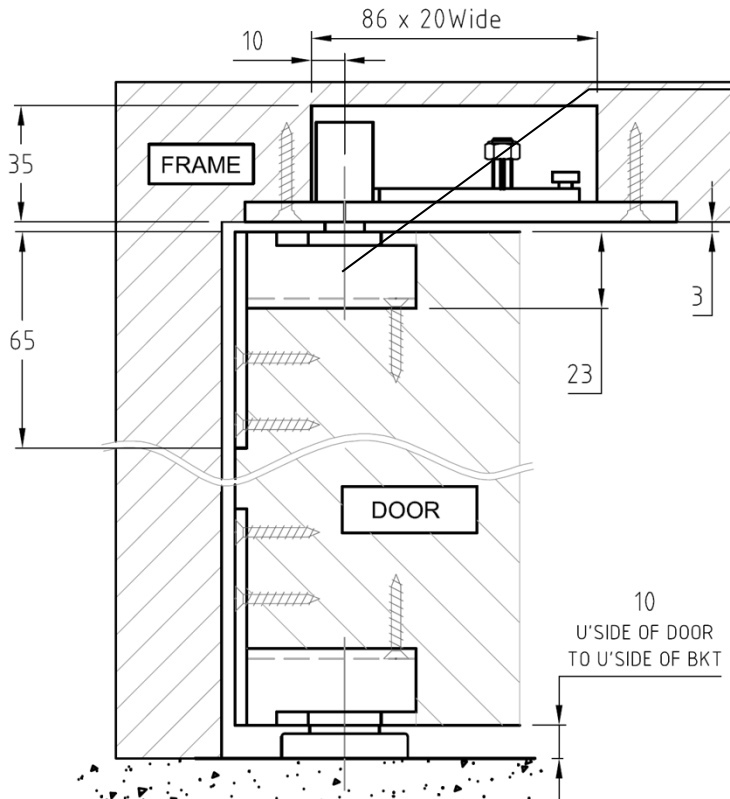
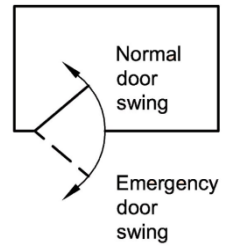


PIVOT CENTRES MUST BE IN  
LINE TO ENSURE SAFE AND  
CORRECT OPERATION

- Grade 304 stainless steel
- Maintenance free, guaranteed for 25 years
- Allows the door to swing in either direction
- Inclusive of adjustable top and bottom brackets (+/-5.5mm)
- For 44mm thick doors an R9 radius is required on the pivot edge
- For 54mm thick doors an R15 radius is required on the pivot edge
- Bottom bracket is floor mounted
- Medium duty for internal doors weighing up to 120kg and up to 1100mm wide
- Top and bottom door plates have HI-LOAD maintenance free oil impregnated bronze bearings
- Set includes door bottom pivot, top centre, door brackets and screws

**Royde & Tucker Ltd**  
Bilton Road  
Cadwell lane  
Hitchin  
SG4 0SB  
Tel:01462 444444  
Fax:01462 444433  
www.ratman.co.uk  
e-mail: sales@ratman.co.uk

## Royde & Tucker H131-452 HI-LOAD pivot set



PIVOT CENTRES MUST BE IN LINE TO ENSURE SAFE AND CORRECT OPERATION

- Grade 304 stainless steel
- Maintenance free, guaranteed for 25 years
- Allows the door to swing in either direction
- Inclusive of adjustable top and bottom brackets (+/-5.5mm)
- For 44mm thick doors an R9 radius is required on the pivot edge
- For 54mm thick doors an R15 radius is required on the pivot edge
- Bottom bracket is frame mounted
- Medium duty for internal doors weighing up to 80kg and up to 1100mm wide
- Top and bottom door plates have HI-LOAD maintenance free oil impregnated bronze bearings
- Set includes door bottom pivot, top centre, door brackets and M5 x 30mm screws

**Royde & Tucker Ltd**  
Bilton Road  
Cadwell lane  
Hitchin  
SG4 0SB  
Tel:01462 444444  
Fax:01462 444433  
www.ratman.co.uk  
e-mail: sales@ratman.co.uk