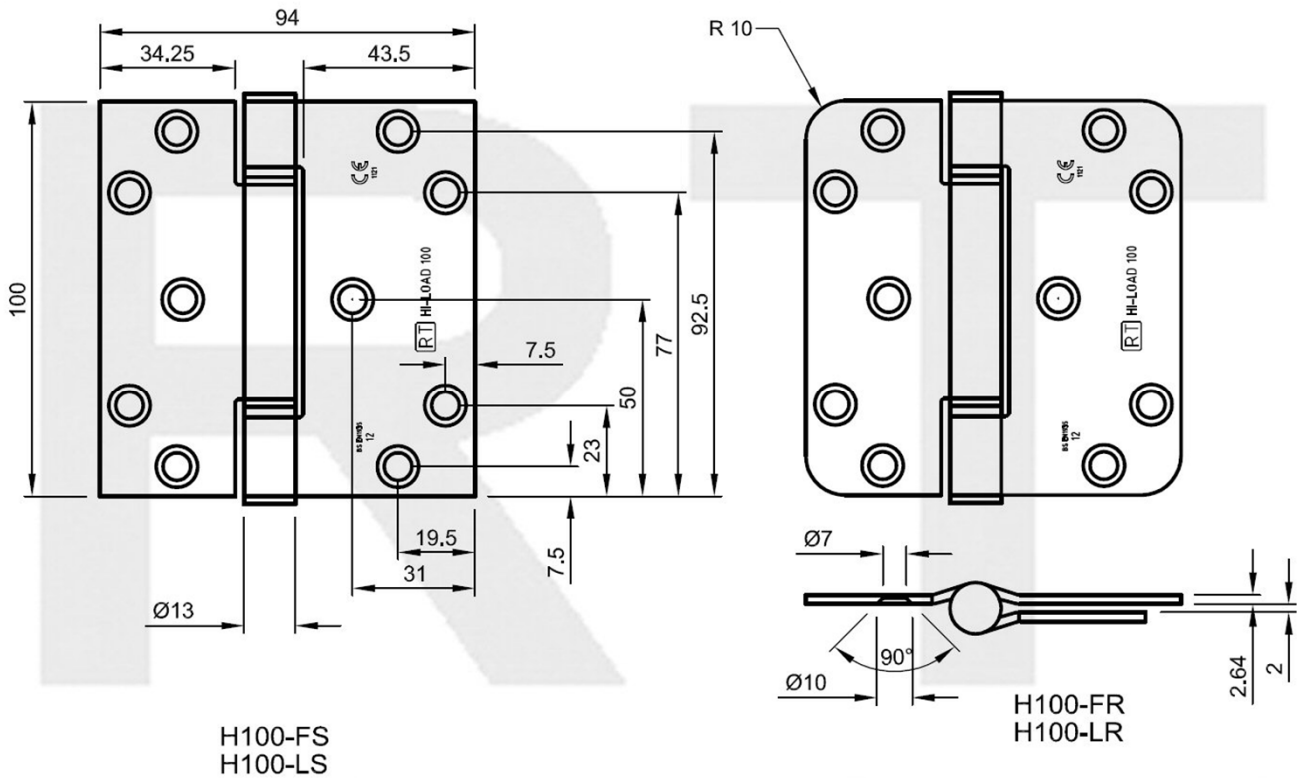


Royde & Tucker H100 HI-LOAD butt hinge



BS EN 1935



- 100x94x2.64mm Three knuckle butt hinge
- Maximum adjusted door weight 100kg
- To BS EN 1935 Grade 12
- Minimum door thickness 44mm
- Maintenance free, guaranteed for 25 years
- CE Certificate No. 2812-CPR-AC0043
- Suitable for use on fire doors: Certifire approved – CF209
- To be fitted with HP100 intumescent hinge pads, if being installed on fire doors
- c/w metric 5 x 32mm wood screws
- Mild steel substrate as standard

Royde & Tucker Ltd
Bilton Road
Cadwell lane
Hitchin
SG4 0SB

Tel: 01462 444444

Fax: 01462 444433

www.ratman.co.uk

e-mail: sales@ratman.co.uk